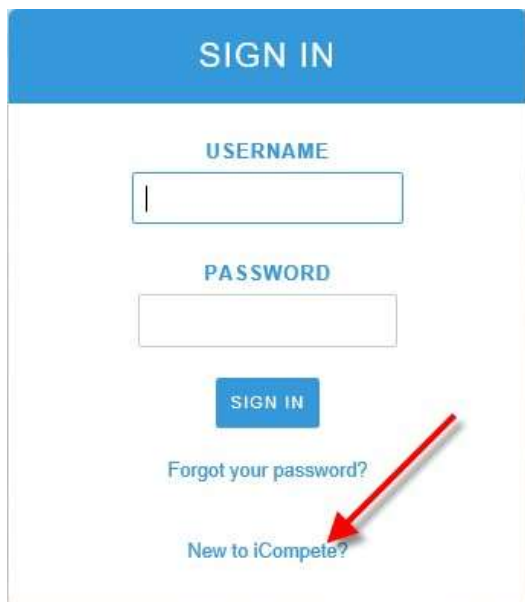


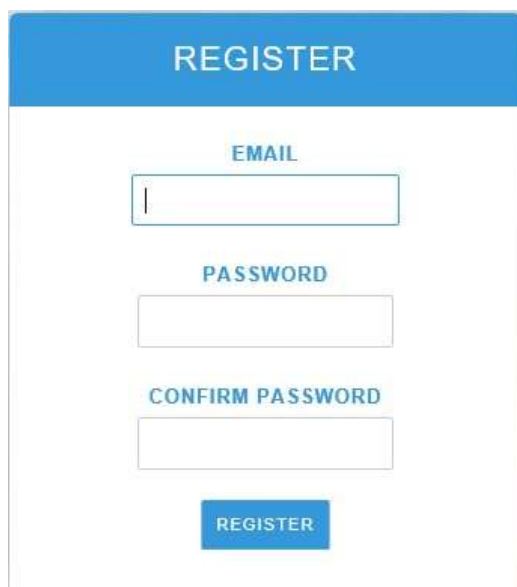
Creating a new iCompete account

1. Go to <https://aqha.icompete.net/> and click on the new to iCompete option.



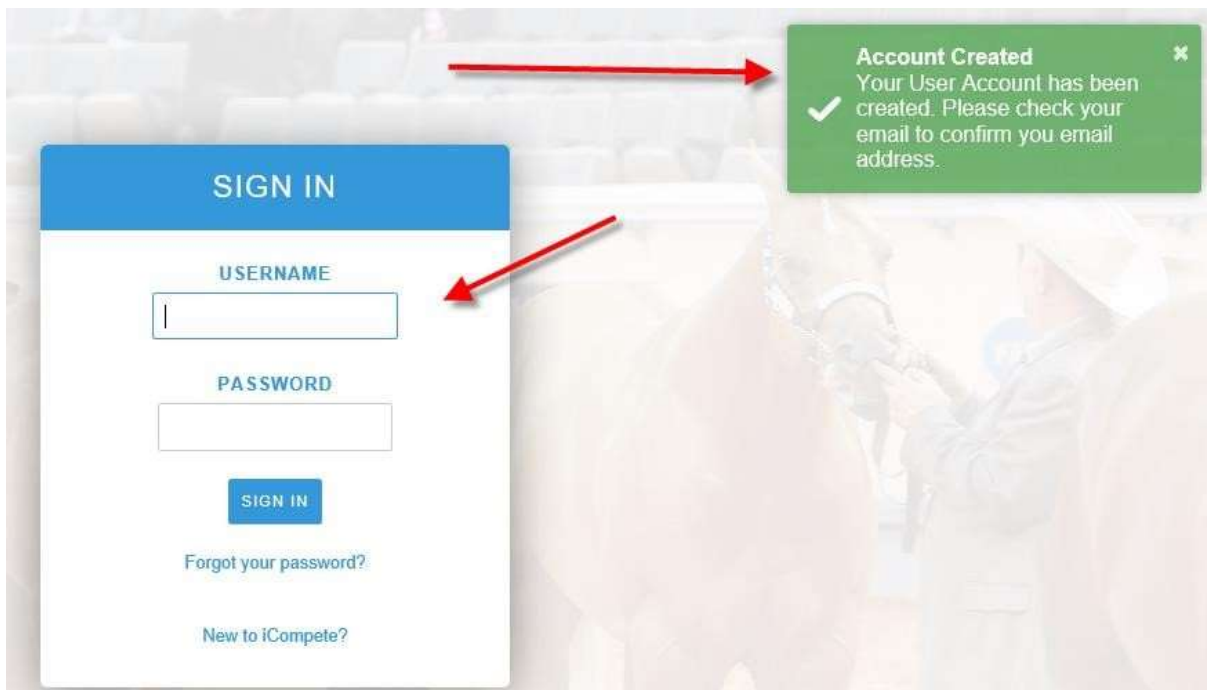
The image shows a 'SIGN IN' form with a blue header. Below the header are two input fields: 'USERNAME' and 'PASSWORD'. A blue 'SIGN IN' button is positioned below the password field. Underneath the button are two links: 'Forgot your password?' and 'New to iCompete?'. A red arrow points from the right side of the form towards the 'New to iCompete?' link.

2. Enter in an email address and password for the account. You will need to use at least one number in the password field. Then press register.

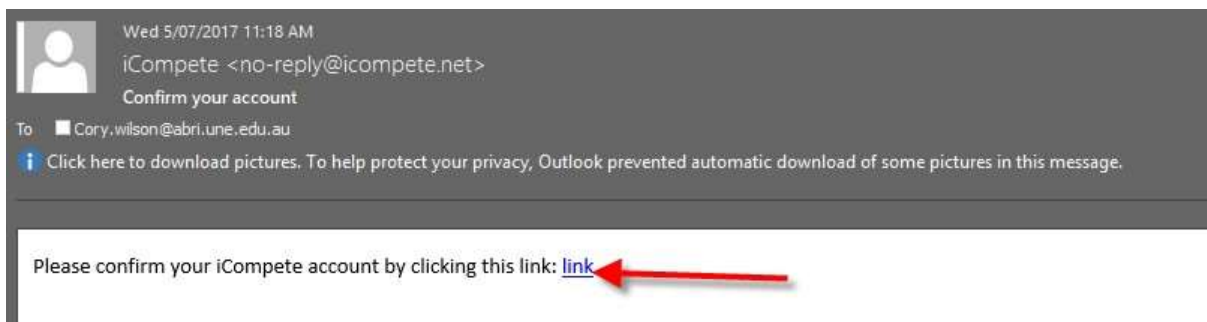


The image shows a 'REGISTER' form with a blue header. Below the header are three input fields: 'EMAIL', 'PASSWORD', and 'CONFIRM PASSWORD'. A blue 'REGISTER' button is located at the bottom of the form.

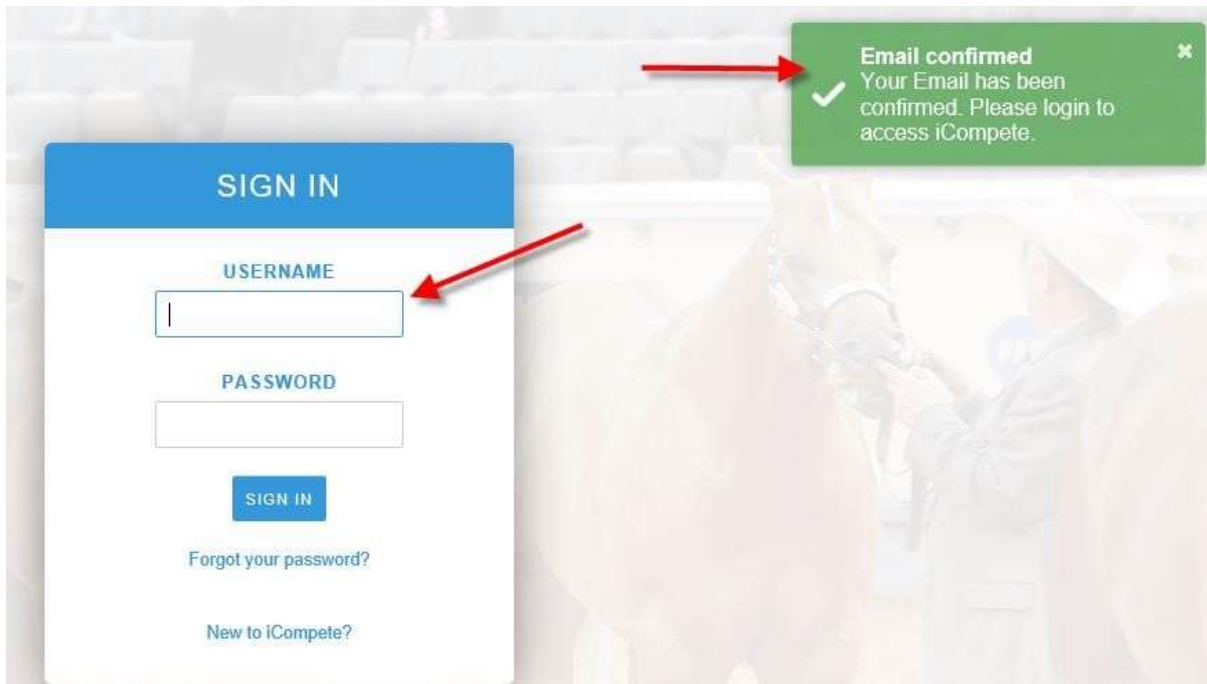
3. You will then be taken back to the login screen where you will get a message about having to confirm the email address entered.



4. Below is the email you will receive to confirm the account. Click on the link option to confirm the account.



5. Once the email is confirmed you will be taken to the login screen with a message saying the email is confirmed. You will then be able to login.



6. When you login you will need to associate the login to a members account. To do this you will be asked to enter the member Ident you wish to associate this login with. Enter the member ID and press associate.
7. Once you have entered a members ID you will be asked to verify some details for that account. Enter the details and press validate.

8. Once the validation has been done you will be taken to the main screen where you can view your existing horses and update/maintain your Membership details in the AQHA database.

Australian Quarter Horse Association

Please select an option below



My Membership



My Animals

If you have any questions about how any of this please feel free to contact the AQHA office on 0267626444